

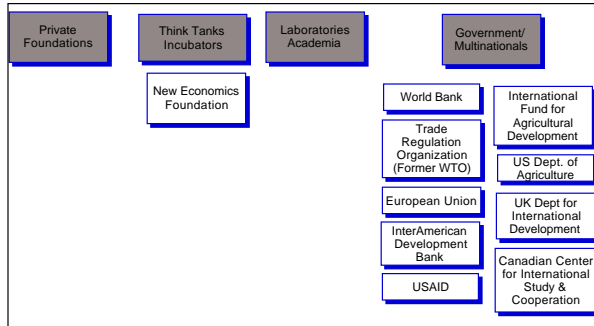
Appropriate Tech: B to 4B



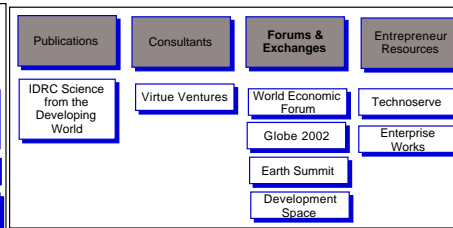
an open source view of the landscape

COLLECTIVE INTELLIGENCE

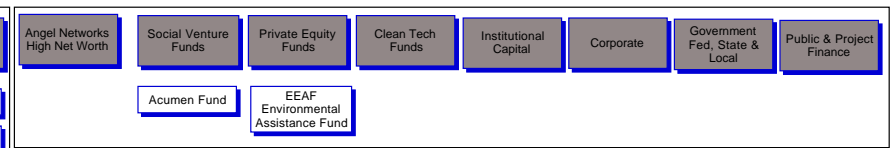
Intellectual Capital



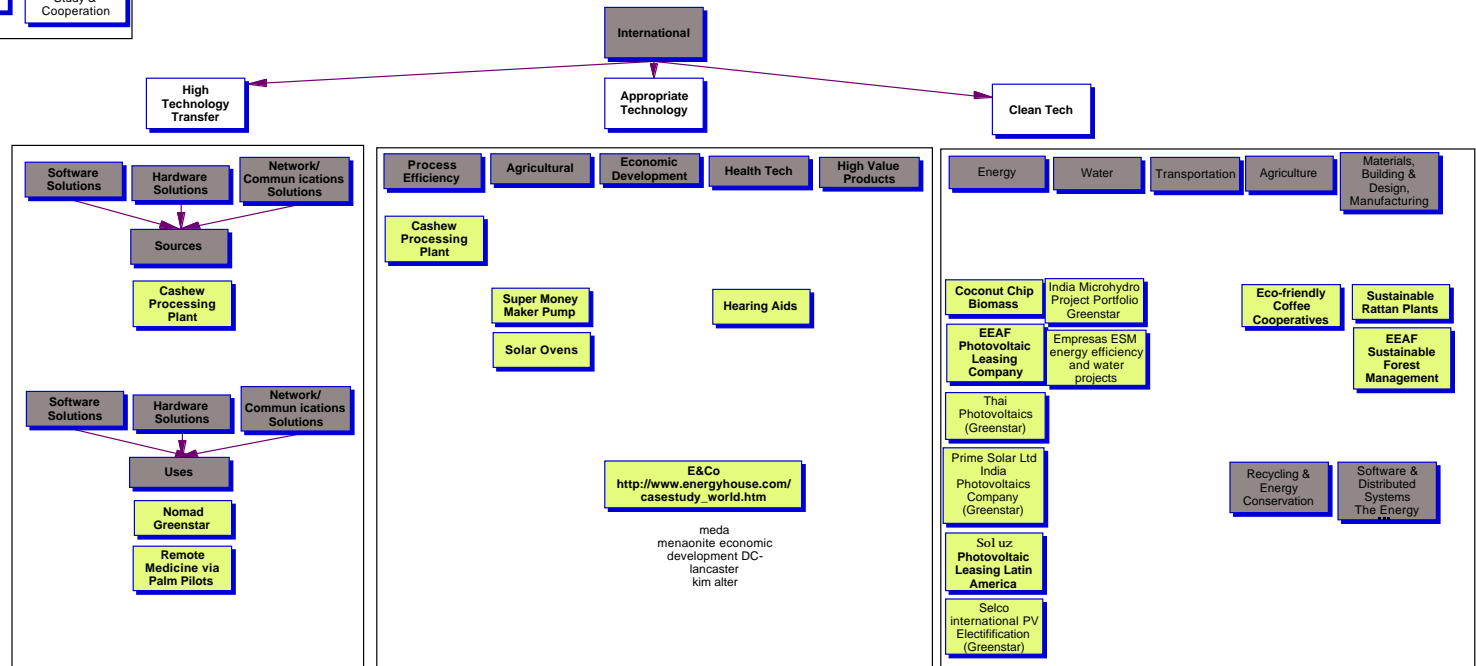
Services



Financial Capital



Companies & Products



Nexus Points **CI Definition of Space** **This is Not**

- Globalization
- Design
- Cultural Sensitivity

1. Tech that's transforming third world countries
2. Ingenuity/engineering without huge behavioral change and non-existent infrastructure for repair
3. Metrics, best practices, analysis only if we can turn it into software.
4. Sustainable Development-compatible with whole systems approach.
5. Tech tipping points for the poorest that make them producers instead of drains on the economy.

Health

Civil Society

Dam Projects

Low Wage Manufacturing

Revenue sharing only with Bto4B

Industry Restructuring (i.e. Cement)

Microfinance FFH

Coffee Cooperatives

Management Efficiency